

Barriers and Challenges

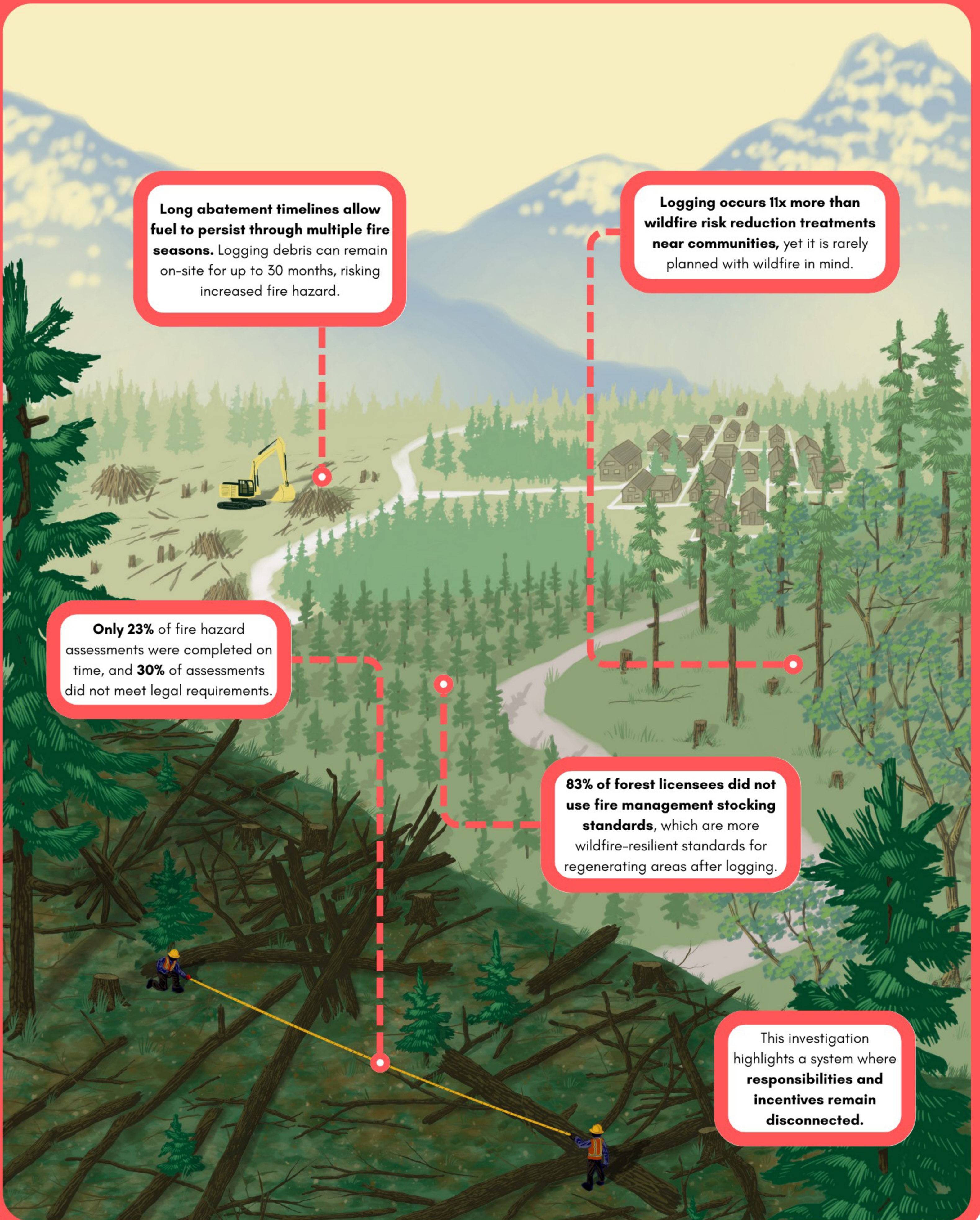
Long abatement timelines allow fuel to persist through multiple fire seasons. Logging debris can remain on-site for up to 30 months, risking increased fire hazard.

Logging occurs 11x more than wildfire risk reduction treatments near communities, yet it is rarely planned with wildfire in mind.

Only 23% of fire hazard assessments were completed on time, and **30%** of assessments did not meet legal requirements.

83% of forest licensees did not use fire management stocking standards, which are more wildfire-resilient standards for regenerating areas after logging.

This investigation highlights a system where **responsibilities and incentives remain disconnected.**



Best Practices

Where professionals integrated risk assessment into operations and followed through with prescribed abatement, fire hazards were reduced before they became seasonal liabilities. Strong examples of abatement emerged where licensees acted quickly and bundled abatement into harvest plans.

Some licensees use **custom venting forecasts or air curtain burners** to burn slash safer and sooner.

Where **communities, land managers, and licensees align**, treatments were coordinated and effective.

Many licensees reduce wildfire risk by **chipping, piling, burning debris and managing access** in high-risk areas.

Some professionals now **design regeneration with fire behaviour in mind**, even considering successional outcomes beyond free growing.



Future State

Established fire management objectives embedded into harvest plans that reduce fuel hazards.

Logging debris abated "as soon as practicable" in interface areas to reduce community wildfire risk.

Municipalities included in the legal definition of the wildland-urban interface so stricter abatement rules apply when logging near population centres.

Modernized BCWS Fire Hazard Assessment Guidelines that address today's limitations and align with best practices in fire risk assessment.

One public hub for every community wildfire risk plan to support coordinated action, community advocacy, and cross-jurisdictional wildfire risk reduction.

